

Sanishower®

Part N° 010



An easy solution for a remote shower or sink installation.

Saniswift®

Part N° 021



An easy solution for a remote laundry room installation.

Saniswift® Pro

Part N° 022



Perfect for residential and commercial laundry room or gray water applications.

Sanivite®

Part N° 008



The perfect quiet solution to install a kitchen anywhere you want.

Sanicom® 1

Part N° 018



The smart solution for high temperature gray water removal.

Sanicom® 2

Part N° 028



Duplex 2HP drain pump for commercial and industrial applications.

Saniflo SFA GROUP

Sanishower® • Saniswift® • Saniswift® Pro
Sanivite® • Sanicom® 1 • Sanicom® 2

DRAIN PUMPS

Humanitarian organization Showering Love expands offering of restroom-shower facilities to Florida homeless community

Equipped with three donated Saniflo Sanishower drain pumps and one Sanibest Pro grinder pump, the newly refurbished Showering Love bus, Faith, becomes the nonprofit's second vehicle to provide those in need with one of life's basic amenities.



CHALLENGE

- 1 Without the assistance of gravity, all showers needed a compact pump system to discharge the water into the holding tank several feet away.
- 2 Pump systems would need to be able to keep up with the incoming flow rate and usage as the shower facilities would be used several times throughout the day.



The common area includes one shared sink connected to the Sanibest Pro and two private shower rooms each connected to a Saniflo Sanishower unit.

SOLUTION

- 1 Three Sanishower pumps were installed next to the shower bases within hours for a quick and clean installation.
- 2 Each Sanishower pump was able to keep up with the flow and was powerful enough to pump up into the holding tank's connection.

Palm Beach pet spa installs SANIVITE Pump for effective drainage of two large bathing tubs

Michael Martin, owner of On Blonde Pet Spa and Boutique, successfully installs compact drain pump to handle the high volume of dog hair coming from two large bathing tubs.



CHALLENGE

- 1 The expansion and remodel of the leased space is close to 20 feet away from the building's sewage access pipe. His drainage options were very limited.
- 2 Very expensive to install a new floor drain in the 100-year-old historic building. This would require breaking through the concrete — not something the owner wanted to do, given the building's age, as well as the likely expense.
- 3 Considering the application, a pet spa, the application required a pump system that will handle all the dog hair from two large tubs.



The two, 50-inch tubs used for daily grooming. The 1.5-inch rigid pipe connected to an existing PVC discharge pipe running to the building's sewage access.

SOLUTION

- 1 Installed the Sanivite drain pump system which is meant to sustain the toughest applications, including a large volume of dog hair.
- 2 Installer estimated that a conventional floor drain would've cost roughly \$50,000, including architectural plans, bathroom, and flooring plans which he saved as total cost wasn't even close to a third of this.
- 3 "We stayed open during the entire remodel. I couldn't be closed. We're a service business, so I needed a way to do this work as quickly and with as few headaches and complications as possible. In the end, thanks to the Sanivite system, the installation took a lot less time and frustration than I expected.", said the owner.

Hope Vibes nonprofit promotes dignity among Charlotte, NC's homeless community with mobile shower and laundry center

The Hope Tank, a 24-foot box truck, is equipped with mobile showers and laundry room, using the SANICOM 1 drain pump from Saniflo.



The Hope Tank, a 24-foot box truck converted into an eco-friendly mobile shower and laundry center.



CHALLENGE

- 1 Install a couple of showers and washing machines inside a 24-foot box truck in a way so all fixtures fit within the available space.
- 2 Find a strong commercial but compact drain pump that would be able to handle 25 to 50 showers a day and handle 15 to 20 loads of laundry.



The Sanicom 1 drain pump showing the 1-inch discharge pipe running vertically to discharge the gray water from the washing machine into the blackwater tank. The washing machine will drain into the Sanicom 1 via a 2-inch inlet (on the left).

SOLUTION

- 1 Installed a Sanicom1 drain pump as it's a very compact system with low inlets which make it perfect for showers and low drainage fixtures.
- 2 Installation was a straightforward, uneventful installation: "Anybody with experience in construction can install these units, because they fit perfectly into the normal flow of things," said the owner.

Coffee shop owner overcomes "nightmare" application challenge by installing Saniflo SANICOM 1 Drain Pumps

Revelstoke Coffee shop owner Alex Stoye uses three drain pumps to discharge gray water from eight plumbing fixtures in his commercial kitchen, handling water up to 190°F.



CHALLENGE

- 1 A huge challenge to install a conventional, below-floor pipe line for the drainage of his equipment in a two-hundred year old building.
- 2 Conventional route would require breaking through the floor — which wasn't really an option, given the building's age and the fact that there is a unit below them.
- 3 Find an alternative solution that would allow for the drainage of all his equipment, which includes two espresso machines, a dishwasher, an ice machine, a three-base sink, two prep sinks, and a reverse osmosis water filter.



A 1-inch PVC drain line is connected to a three-bay sink and dishwasher situated to the right of the pump trio. This drain line first runs into a grease trap before connecting to one of the Sanicom 1 units.

SOLUTION

- 1 Install a couple of Sanicom 1 units as these can handle up to 194°F water, making it perfect for commercial kitchen applications where dishwashers must operate at exceptionally high temperatures to meet health and sanitation standards.
- 2 "It's hard to put a dollar value on it, but without these pumps, our business wouldn't be operational," said the owner. "Saniflo made the business possible, and the Sanicom 1 units have saved us a lot of time, money and headaches."

Saniflo SFA GROUP

US: 800-571-8191
saniflo.com

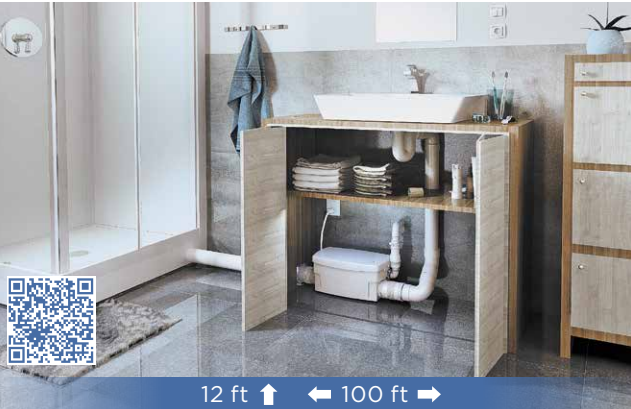
CDN: 800-363-5874
saniflo.ca

Sanishower®

Part N° 010

The SANISHOWER gives you a fast and easy way to add an additional sink or shower to your home.

- Ideal for medium duty applications.
- Pre-assembled system with low 2" inlets and built-in check valves.
- Easy to install and small enough to fit under a shower base.



Discharge rate at 12':
14 gal/min
(53 liters/min)

Discharge rate at 3':
20 gal/min
(76 liters/min)

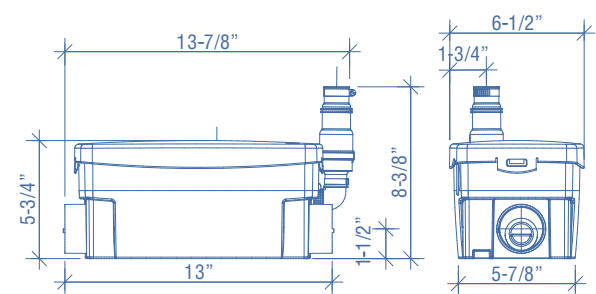
Discharge pipe diameter:
3/4"

Power supply:
115 V - 60 Hz

Amperage:
5.5 A

HP:
0.2

Temperature:
104°F (110°F Max.)

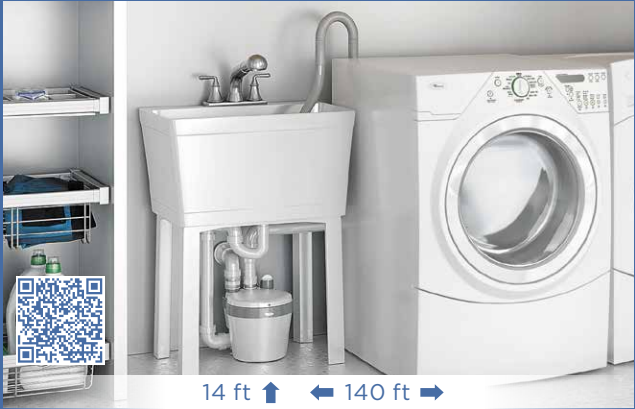


Saniswift®

Part N° 021

The SANISWIFT can handle multiple fixtures to solve the most difficult installations. Saniswift sets the standard as the ultimate drain pump.

- Ideal for residential applications.
- Pre-assembled system with low inlets and built-in check valves
- Powerful and economical pump with multiple inlets for various installations



Discharge rate at 14':
18 gal/min
(68 liters/min)*

Discharge rate at 3':
24 gal/min
(91 liters/min)*

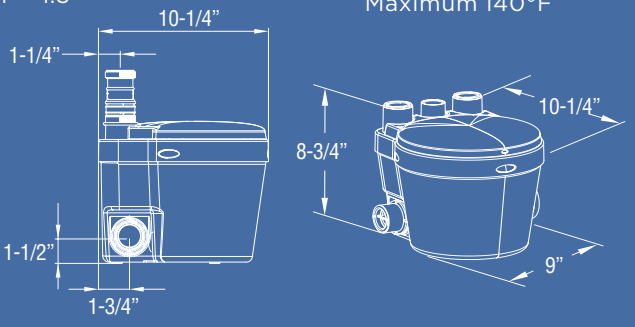
Discharge pipe diameter:
1" - 1.5"

Power supply:
115 V - 60 Hz

Amperage:
4.5 A*

HP:
0.3

Temperature:
Maximum 140°F



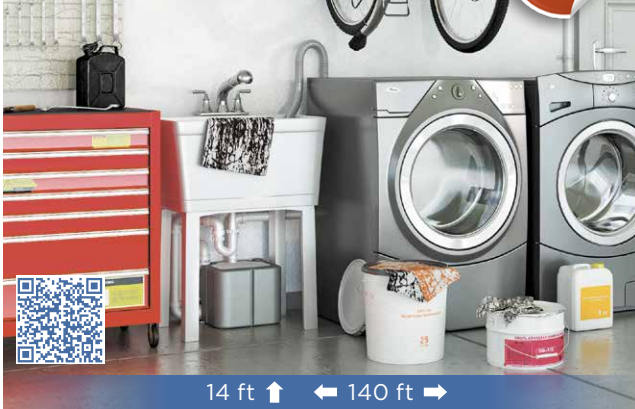
*Measured using 1" discharge. Information will vary once the discharge size is increased. Consult with factory.

Saniswift® Pro

Part N° 022

The SANISWIFT PRO is a powerful and economical drain pump with a compact quiet design for residential and commercial applications.

- Pre-assembled system with 2" low inlets with built-in check valves.
- Superior water detection system (air pressure switch) and easy access to its main components.



Discharge rate at 14':
18 gal/min
(68 liters/min)*

Discharge rate at 3':
24 gal/min
(91 liters/min)*

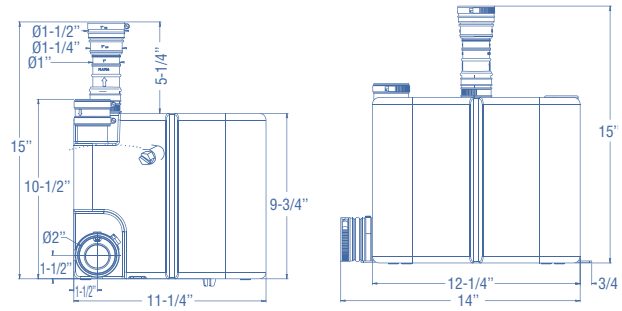
Discharge pipe diameter:
1" - 1.5"

Power supply:
115 V - 60 Hz

Amperage:
4.5 A*

HP:
0.3

Temperature:
Maximum 140°F



*Measured using 1" discharge. Information will vary once the discharge size is increased. Consult with factory.

Sanivite®

Part N° 008

The SANIVITE is the perfect solution for installing a kitchen sink with it's quiet and powerful performance.

- Ideal for heavy-duty applications as it can handle hot water and grease buildup
- Pre-assembled system with low 2" inlets and built-in check valves for various installations



Discharge rate at 16':
18 gal/min
(68 liters/min)*

Discharge rate at 3':
29 gal/min
(110 liters/min)*

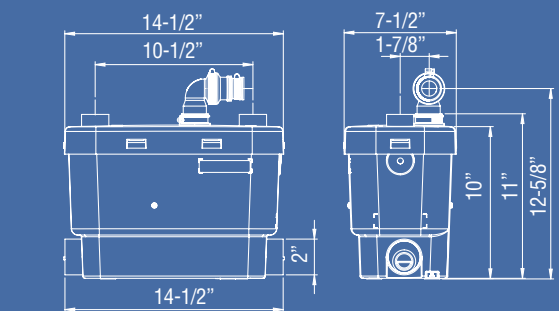
Discharge pipe diameter:
1" - 1.5"

Power supply:
115 V - 60 Hz

Amperage:
4.5 A*

HP:
0.4

Temperature:
Maximum 140°F



*Measured using 1" discharge. Information will vary once the discharge size is increased. Consult with factory.

Sanicom® 1

Part N° 018

The SANICOM 1 drain pump is used to pump gray water away from a variety of fixtures in commercial and residential applications.

- Powerful 1.3 HP drain pump designed to handle the toughest applications. It is capable of managing extremely aggressive water and rated up to 194°F.
- Superior water detection (air pressure switches) with fail-proof system giving a longer life expectancy without any maintenance.



Discharge rate at 25':
23 gal/min
(87 liters/min)

Discharge rate at 3':
50 gal/min
(189 liters/min)*

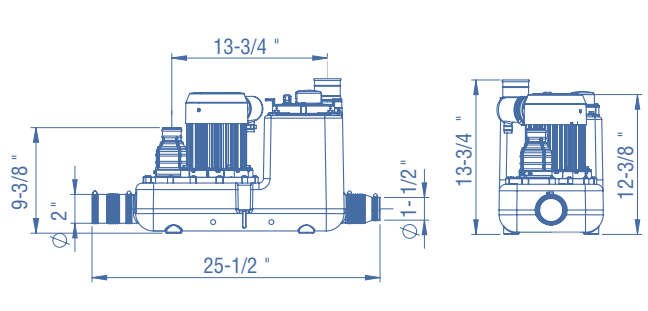
Discharge pipe diameter:
1"

Power supply:
115 V - 60 Hz

Amperage:
8.3 Amps (Max)

HP:
1.3

Temperature:
Maximum 194°F

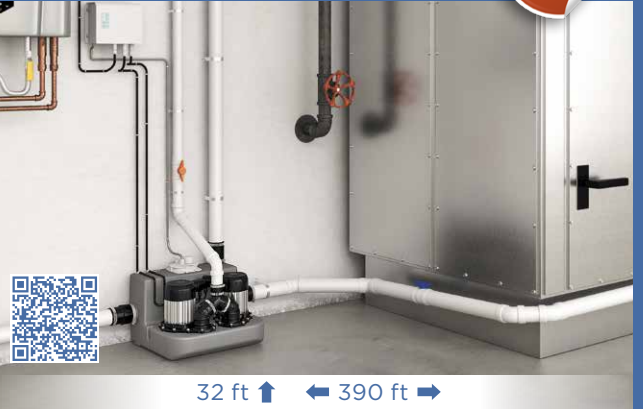


Sanicom® 2

Part N° 028

Powerful 2 X 2 HP drain pump capable of handling temperatures up to 194°F in commercial applications.

- Pre-assembled system with 2" low inlets capable of handling multiple fixtures simultaneously.
- Superior water detection (air pressure switches) with fail-proof system giving a longer life expectancy without any maintenance.



Discharge rate at 32':
81 gal/min
(Both motors in operation)
(307 liters/min)

Discharge rate at 3':
140 gal/min
(Both motors in operation)
(530 liters/min)

Discharge pipe diameter:
1-1/2"

Power supply:
220-240 V - 60 Hz

Amperage:
16 Amps (Max)

HP:
2 x 2HP

Temperature:
Maximum 194°F

